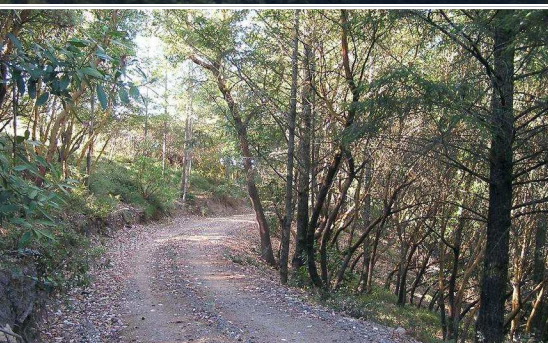
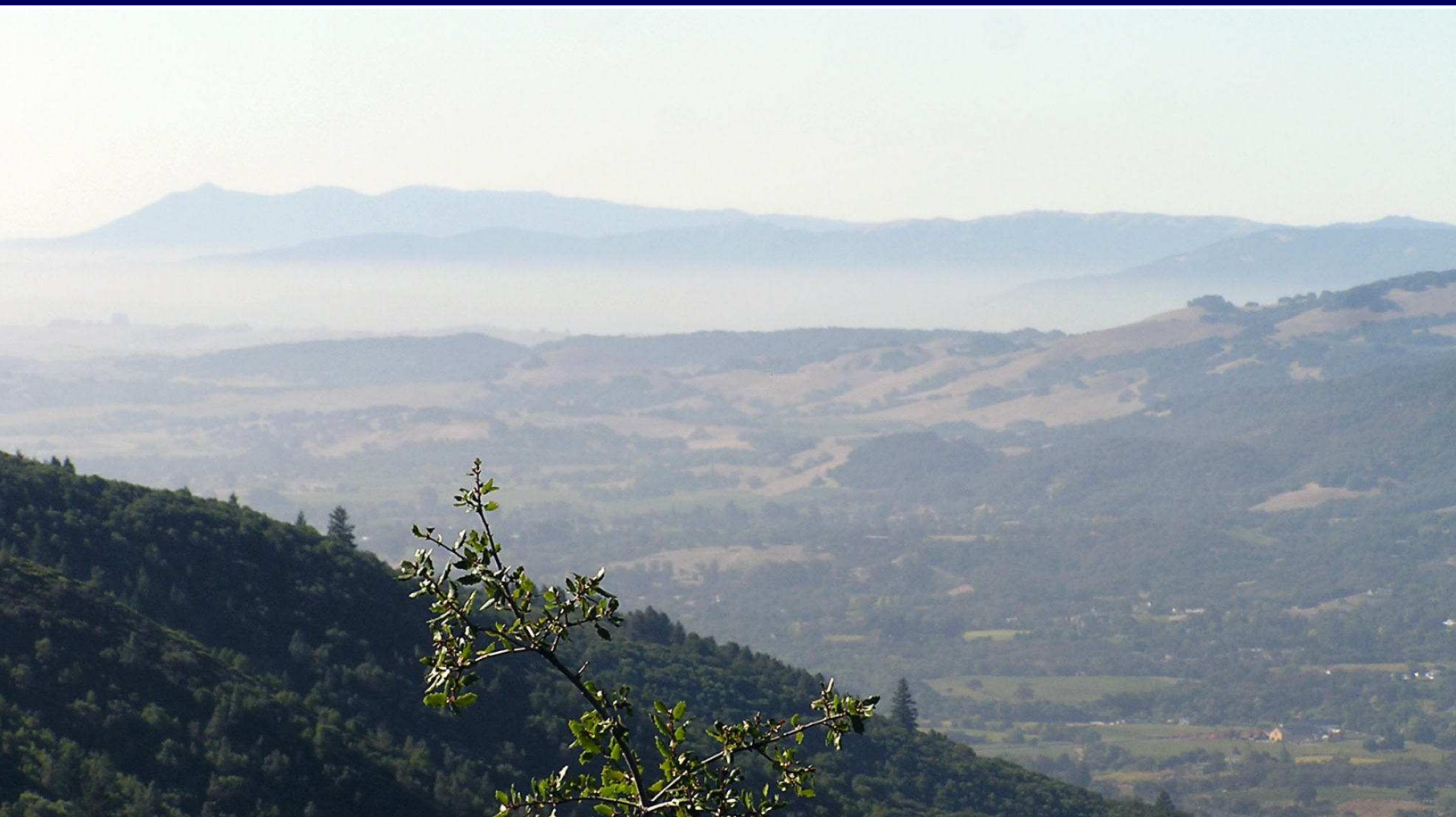


3131 Trinity Road, Glen Ellen



Features

- ▶ 26+/- park-like acres
- ▶ Installed & vested 4-bdrm septic
- ▶ Underground electric to well
- ▶ Road graded to building site

World Class Views and Privacy

A rare estate parcel between Sonoma and Napa wine valleys offering panoramic views across Sonoma and Marin Counties and fantastic evening sunsets. A gorgeous natural setting with towering redwood and fir trees in your own private park with winter creek. This ready-to-build wine country parcel awaits your building plans.

Visit www.3131trinityroad.com for more photos and information.

Offered at \$1,149,000



Love where you live

THE WINE COUNTRY GROUP™

www.winecountrygroup.com



Erick Rothfeld
707-939-2035

winecountrylife@yahoo.com

The above information is deemed reliable but has not been verified by listing broker and is not guaranteed. Independently Owned and Operated.