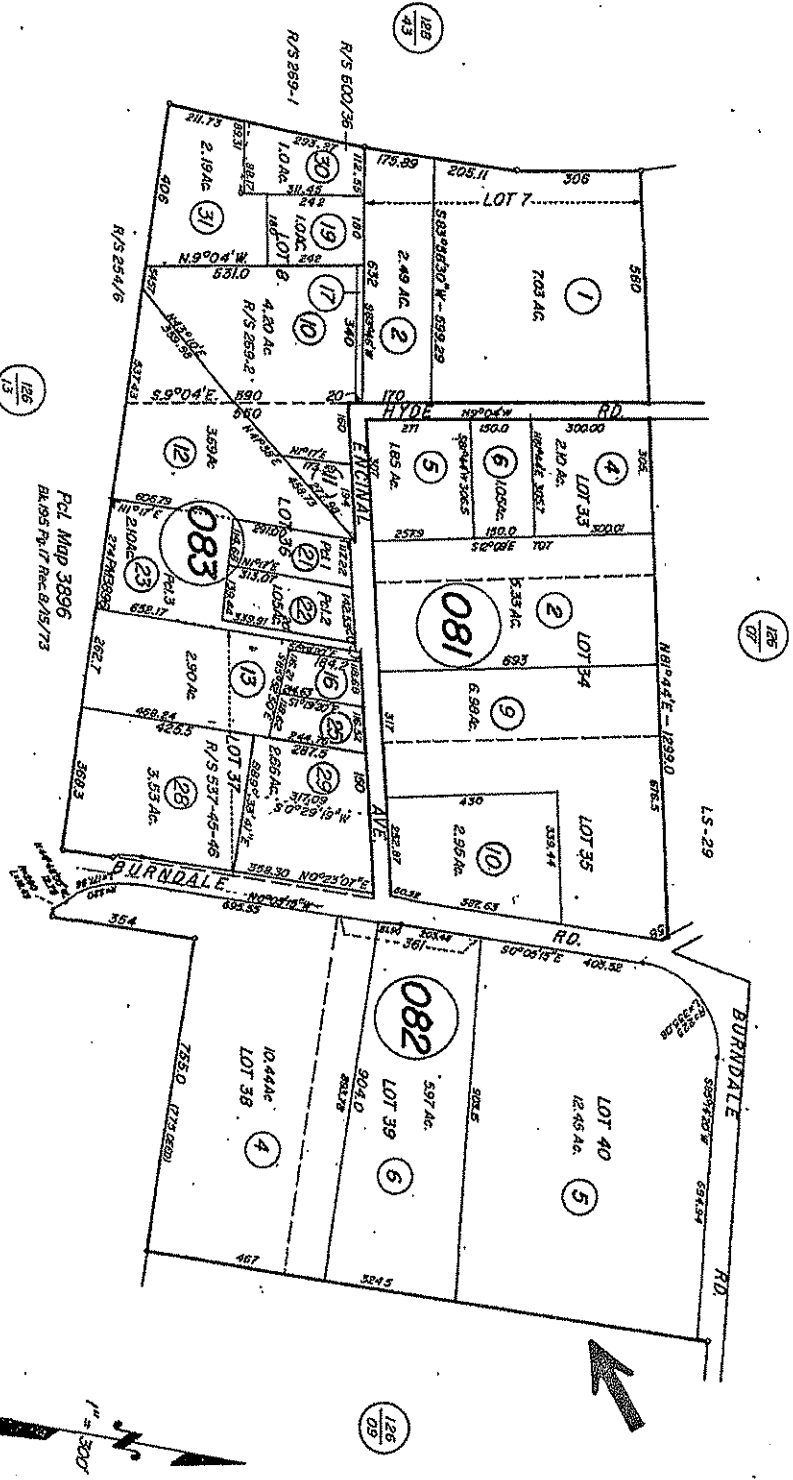


# COUNTY ASSESSOR'S PARCEL MAP

TAX RATE AREA  
158-046

126-08



NOTE: Assessor's parcels do not necessarily constitute legal lots. To verify legal parcel status, check with the appropriate city or county community development or planning division.

## HYDE RANCH SUBDIVISION (Part Of)

NOTE: THIS MAP WAS PREPARED FOR ASSESSMENT PURPOSES ONLY. NO LIABILITY IS ASSUMED FOR THE ACCURACY OF THE DATA DELINEATED HEREON.

- Revised
- 8-20-75
  - 2-6-74
  - 12-10-81 = 27
  - 10-19-85 = 29 1st
  - 2-8-00 = R/S RL
  - 10-5-04 = 31(083) RL

Assessor's Map Bk. 126 pg. 08  
Sonoma County, Calif.